



Merton & Lambeth

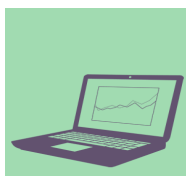
Citizens Advice Merton and Lambeth Services Opening Times 2018

LAMBETH



Telephone: One Lambeth Advice Line **0800 254 0298 (free phone)**
Monday to Friday, 10am to 4pm

There is a high demand for telephone support so we are not able to answer every call that we receive. If you do not get through on the first try, please do continue to try. Afternoons and days later in the week tend to be quieter.



Email us at: <https://caml.org.uk/advice-contact/>. This service makes it easy for you to send a direct message highlighting your query/problem. On receipt of your query we look to respond within 2 working days.

Visit Us Streatham Hill - 1 Barrhill Road, Streatham, SW2 4RJ

Monday	Adviceline (telephone and email service) 10 am – 4 pm	Drop In session* including assessment and advice 10am to 2pm (last queue ticket issued just before 1pm). Information & pre-booked appointments (10am to 4pm)
Tuesday	Adviceline (telephone and email service) 10 am – 4 pm	Information & pre-booked appointments (10am to 4pm)
Wednesday	Adviceline (telephone and email service) 10 am – 4 pm	Pre-booked appointments only
Thursday	Adviceline (telephone and email service) 10 am – 4 pm	Drop In session* including assessment and advice 10am to 2pm (last queue ticket issued just before 1pm). . Information & pre-booked appointments (10am to 4pm)
Friday	Adviceline (telephone and email service) 10 am – 4 pm	Pre-booked appointments only

*A limited number of assessment sessions are available on the day on the basis of first come, first served.